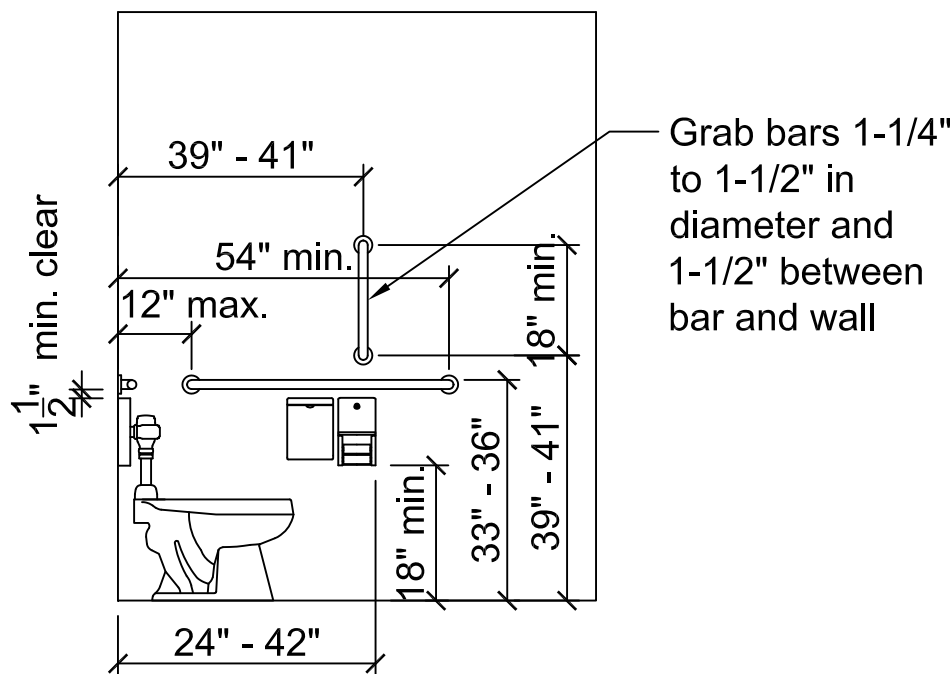
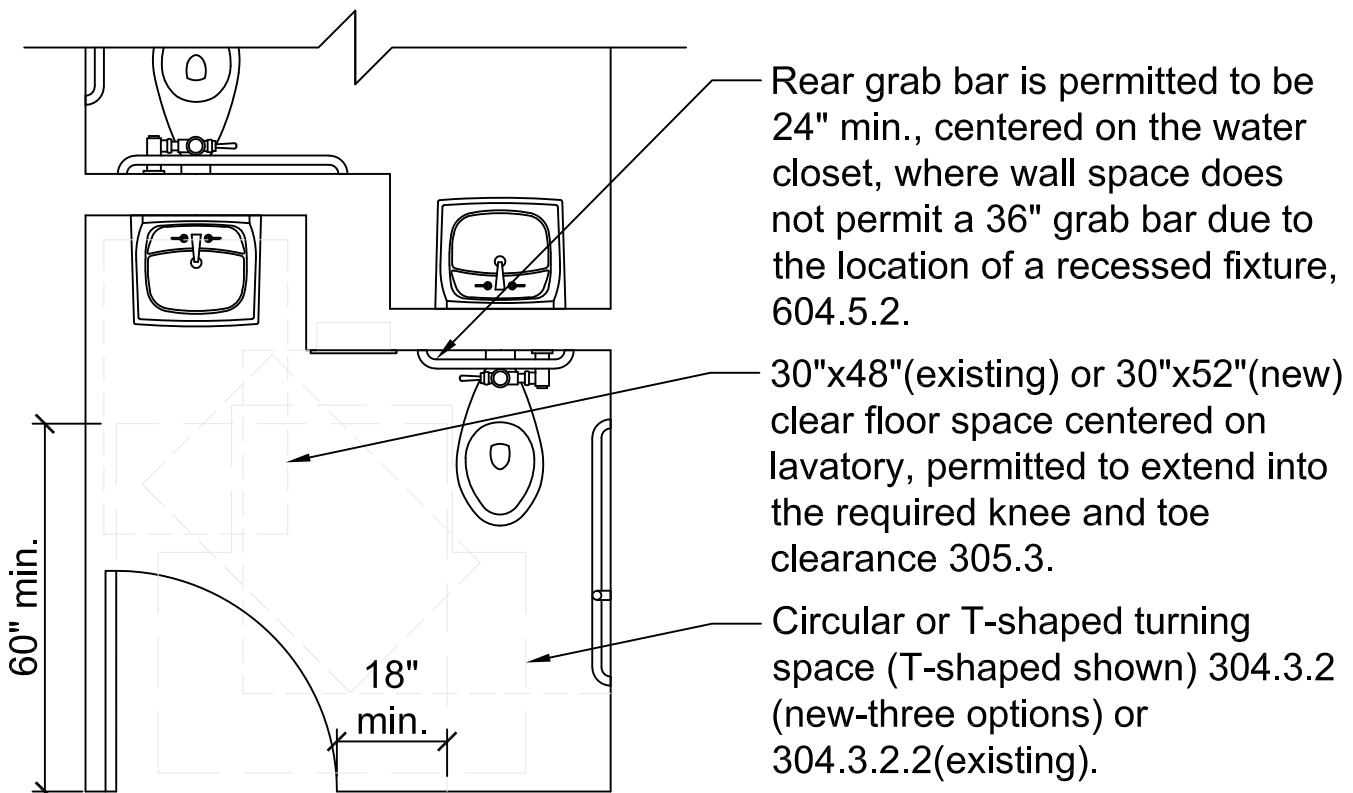
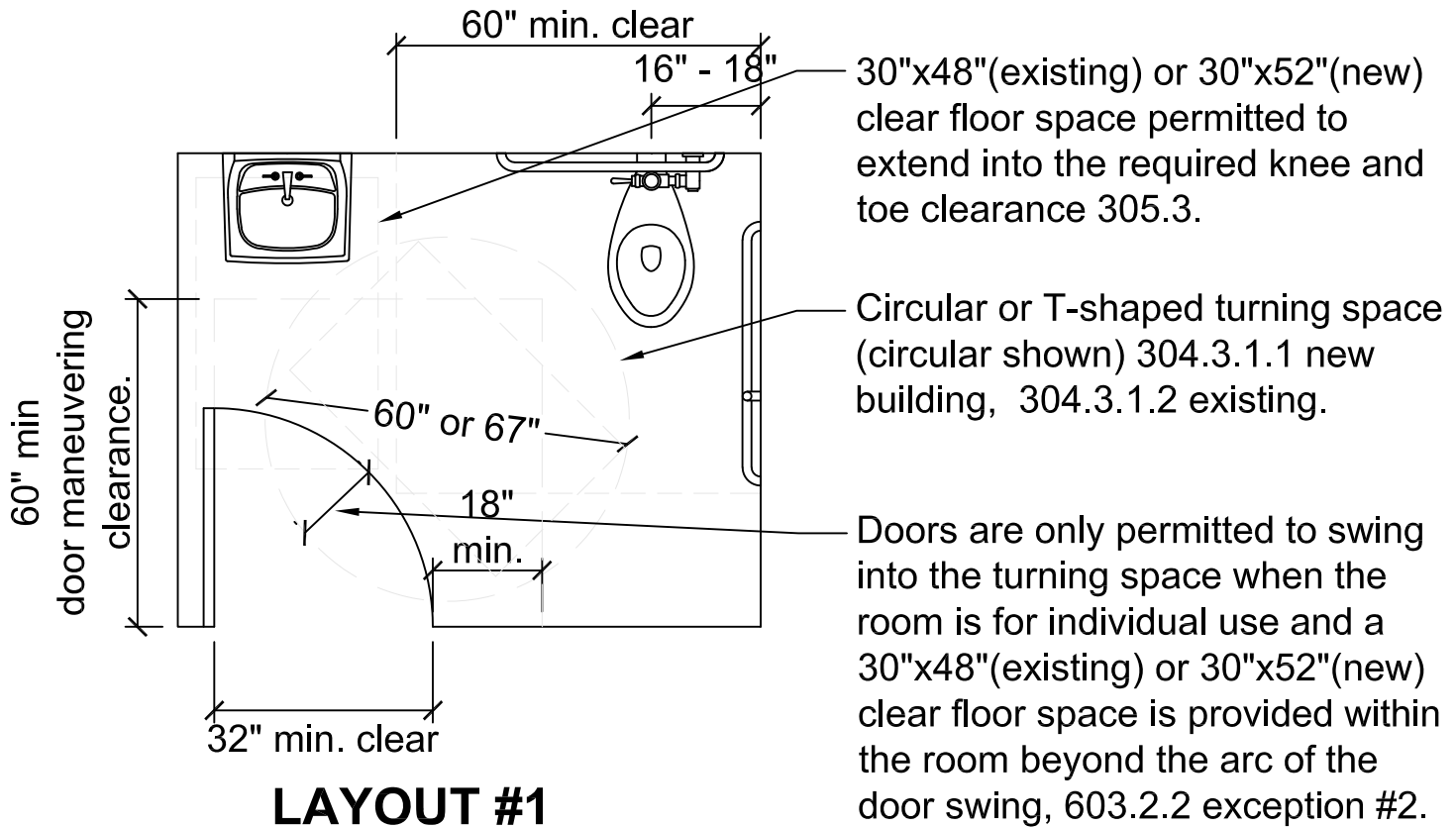


BACK WALL

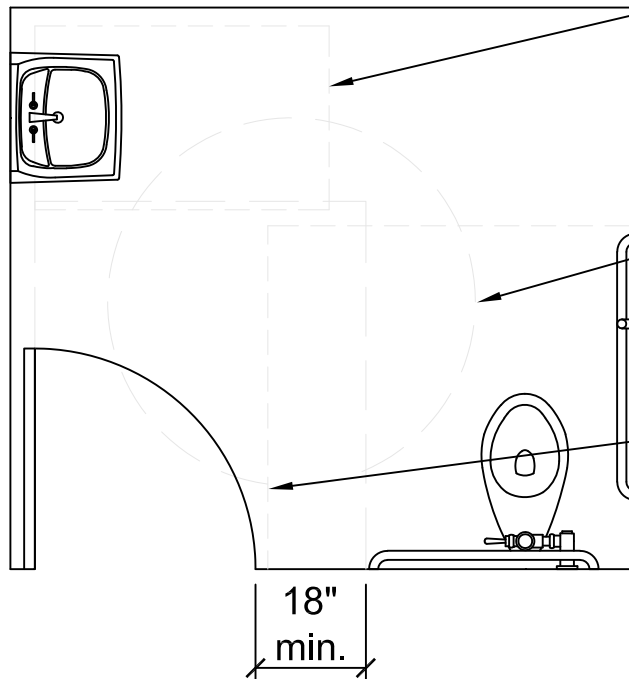


SIDE WALL



Southwest Washington Chapter of ICC

This construction detail is illustrative of the minimum standard of construction based upon the 2021 IBC / WAC 51-51, ICC A117.1-2017
Visit our web site at: www.sww-icc.org

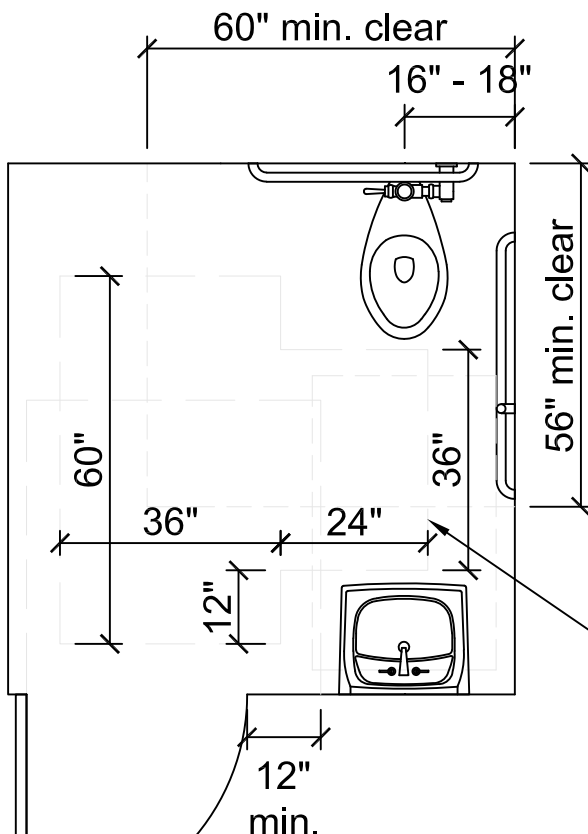


30"x48"(existing) or 30"x52"(new) clear floor space permitted to extend into the required knee and toe clearance 305.3.

Circular or T-shaped turning space (circular shown) 304.3.1.1 new construction, 304.3.1.2 existing.

Clearance at water closet, 60" minimum in width, measured perpendicular from the sidewall x 56" minimum in depth measured perpendicular from the rear wall.

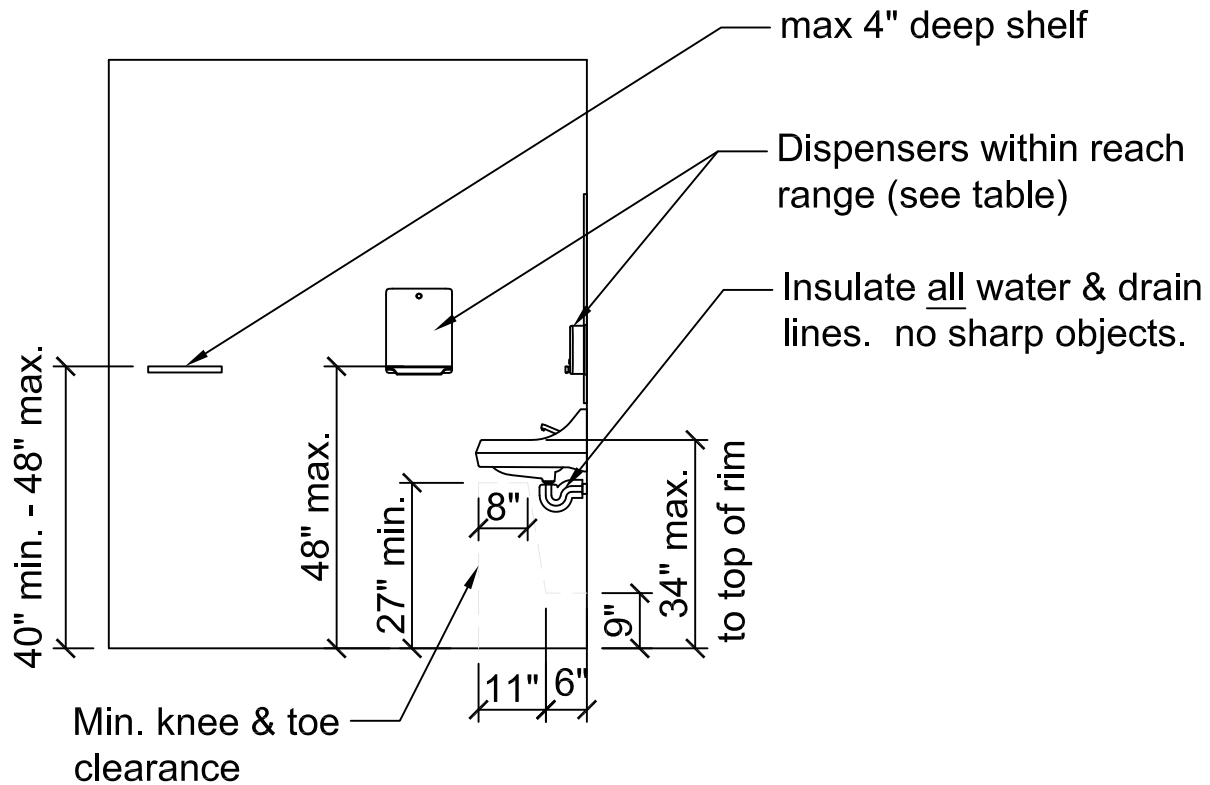
LAYOUT #3



Circular or T-shaped turning space (T-shaped shown) 304.3.2 (new-three options) or 304.3.2.2(existing).

LAYOUT #4

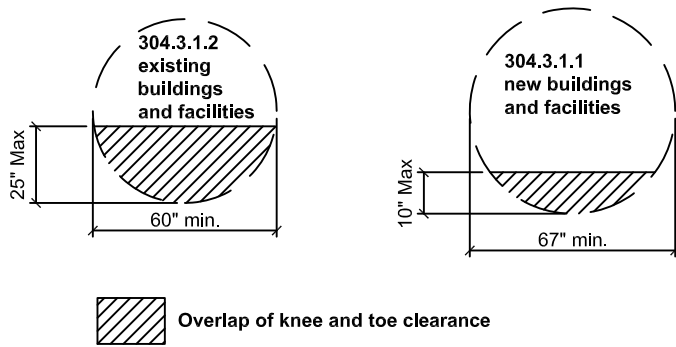
These details provided courtesy of MyBuildingPermit.com



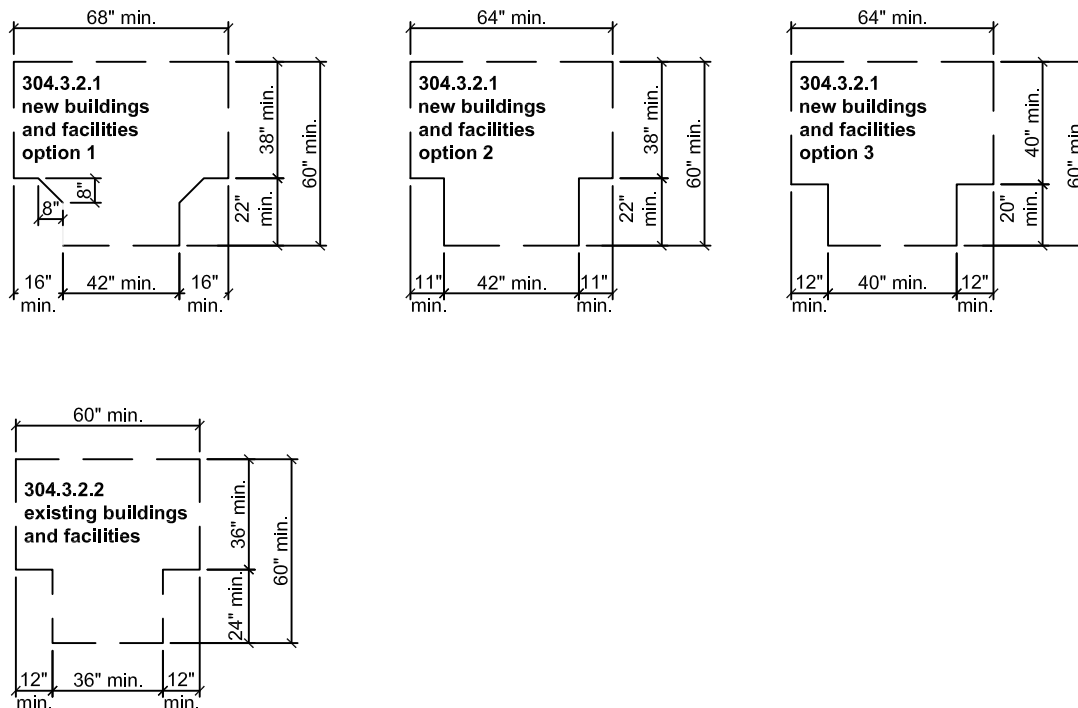
OBSTRUCTION DEPTH, MAX	DISPENSER REACH HT. MAX.
0.5 IN	48 IN
2 IN	46 IN
5 IN	42 IN
6 IN	40 IN
9 IN	36 IN
11 IN	34 IN

REACH RANGE TABLE 603.6

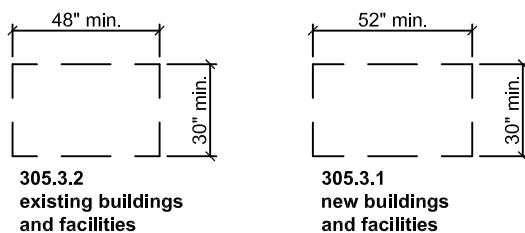
Where dispensers, outlets, or controls are installed above obstructions (lavatories, etc), ensure max. depth and height in accordance with ICC/ANSI A117.1 Table 603.6



CIRCULAR TURNING SPACE SIZE AND OVERLAP



T-SHAPED TURNING SPACE SIZE AND OVERLAP



SIZE OF CLEAR FLOOR SPACE